



SCHOOL OF GLOBAL HEALTH

Graduate Affairs, Faculty of Medicine
Chulalongkorn University

Tel: +66 2256 4475 | Email: school.global.health@chula.md | <https://sgh.md.chula.ac.th>

WELCOME



“

Our collective spirit at the School of Global Health (SGH) is strong with a commitment to raising health equity for underserved populations not just in Thailand and our Southeast Asian region, but for the entire world.

We believe that accessible healthcare can be achieved through clinical, research and community health collaborations. Therefore, we take on the initiative to utilize our over 75 years of expertise to better the healthcare environment on all fronts. It is our mission to be a catalyst for clinician and scientific researchers, along with public policy makers and those dedicated individuals to decrease health inequities in the community at large while simultaneously promoting affordable, effective and sustainable health solutions.

We therefore, welcome you to our School of Global Health (SGH) where we are “filling gaps and building bridges for health equity” each and every day.

”

Professor Suttipong Wacharasindhu, M.D.
Senior Executive Committee
School of Global Health (SGH)

“

At the Faculty of Medicine, Chulalongkorn University (MDCU), we’re focusing more on sustainability and the goals set forth by the UN Sustainable Development Goals. These include major pillars such as Society, Economy and the Environment. We are focused in the subsets of Health, Education, Inequity and Partnerships, to enable MDCU to both deepen and widen our ability to affect change in our society.

It’s as simple as promoting more platforms for partnerships—to help seek out different organizations, domestic and international, that share our same goals to improve the quality of healthcare for all. It can even be seen in promoting our global experts in their respective fields to help shine the light on new health innovations that are developed for the good of the society.

”

Associate Professor Chanchai Sittipunt, M.D.
Dean
Faculty of Medicine,
Chulalongkorn University (MDCU)



MESSAGE FROM THE DIRECTOR



“

Great achievements with lasting impact have become a thing of the past. We therefore, brave the unexpected future with an understanding that we all must come together to accomplish our set task of promoting health equity and reducing health inequalities for vulnerable populations.

Our work at the School of Global Health (SGH) ensures that those of us in healthcare related fields are doing our part to offer global health solutions to face today's emerging global health challenges. Our advancements in Emerging Infectious Diseases, Genomics, Health Systems, HIV and TB, Immunization, Non-Communicable Diseases, Stem Cells, Tropical Medicine and Vaccine Development have attracted many multi-disciplinary collaborations with top tier medical and research programs around the world. Our diverse course offerings and non-degree programs allow for everyone in the global healthcare arena to advance their knowledge base and gain more hands-on training in real life settings.

On behalf of everyone at the School of Global Health (SGH), I welcome you to a brighter tomorrow, together.

”

Professor Kiat Ruxrungtham, M.D.
Director
School of Global Health (SGH)

OUR SGH STORY

The School of Global Health (SGH) was founded on the principles of a shared responsibility of all healthcare personnel and sectors to tackle global health challenges. To prevent and face emerging and ongoing health threats, we realized the need for a strong network to promote global health security for vulnerable and underserved populations.

Flattened healthcare landscapes have given way to cross-border disease migration. We all have felt the severe impact of such health threats including the most recent COVID 19 pandemic, therefore, the call to action for fast-moving joint efforts in research and development are greatly needed.

The SGH draws from the strengths of the Faculty of Medicine, Chulalongkorn University (MDCU) and the King Chulalongkorn Memorial Hospital (KCMH) to tackle challenging health issues, accelerate research advancement and capacity building with partner institutions from all regions of the globe and international networks and organizations for innovative and sustainable solutions.

Our unique SGH addresses the global health challenges by offering a diverse range of post-graduate programs offered at MDCU with focused degrees to provide both in-depth knowledge and practical application for well-rounded and functional experiences to both degree seeking and non-degree seeking healthcare professionals.

Come see how you can gain more experience to help contribute to the fight against global threats and health challenges today at the SGH.

OUR MISSION

The SGH creates high quality international graduate programs to prepare future leaders for global health challenges.

OUR VISION

We leverage our global platform to strengthen healthcare cooperations and shape the landscape of health sustainability while grooming future global health leaders and equipping them with skills to solve global health challenges on the horizon.

“Promoting Multi-disciplinary Learning From Bench to Field Research”



YOUR OPPORTUNITIES BEGIN HERE

SCHOLARSHIPS

Available to students based on research merit and performance. Includes traveling cost, tuition and living expenses.

DOUBLE PhD PROGRAM

Study for at least 6 months at University of Liverpool with our international double degree program in Biomedical Sciences and Biotechnology. (Chulalongkorn University & University of Liverpool)

PROFESSIONAL DEVELOPMENT

Gain first-hand scientific, clinical or operational research training and networking experience at a designated partner institution.

COTUTELLE PROGRAM

Qualified students can conduct research in Thailand and abroad, and receive two degrees. (Chulalongkorn University & Macquarie University)

LINKAGES

Students can grow with the vast SGH network. Get to work with global institutions and team up with various co-curricular activities.

STRATEGIC PARTNERS: 57 MOUs



FLAGSHIP RESEARCH AREAS



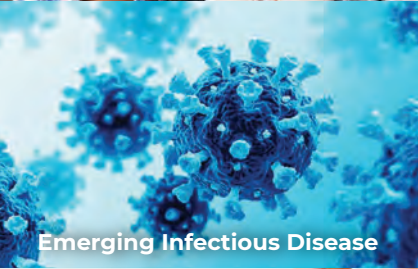
Adolescent Health



Aging Medicine and Healthcare



Cancer



Emerging Infectious Disease



Genomics



Health Systems



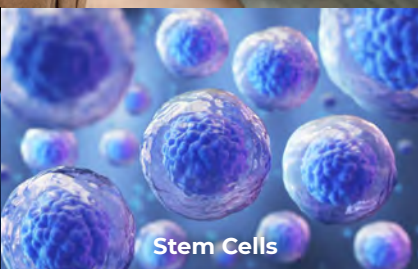
HIV and TB



Immunization



Non-Communicable Diseases



Stem Cells



Tropical Medicine



Vaccine Development

OVER 20+ RESEARCH AREAS

- Pediatric and Adolescent Health
- Aging Medicine and Healthcare
- Cancer Research and Immunotherapy
- Systems Biology
- Vaccine Development and Immunization
- Emerging Infectious Diseases
- One Health
- HIV and Tuberculosis
- Tropical Medicine
- Molecular Biology of Malaria and Parasites
- Clinical Trials in Global Health
- Clinical Pharmacokinetics and Pharmacogenomics
- Metabolic Disorders and Non-Communicable Diseases
- Genomic Medicine
- Neuroscience and Mental Health
- Tele-Health
- Sexual and Reproductive Health
- Transgender Medicine
- Advanced Therapy Medicinal Products Development
- Health Systems and Public Health Insurance Schemes
- Complementary Medicine Services and Systems
- AI and Big Data for Public Health
- AI in Healthcare and Medicine
- Innovations in Medical Education

For more information, please visit the website <https://sgh.md.chula.ac.th>

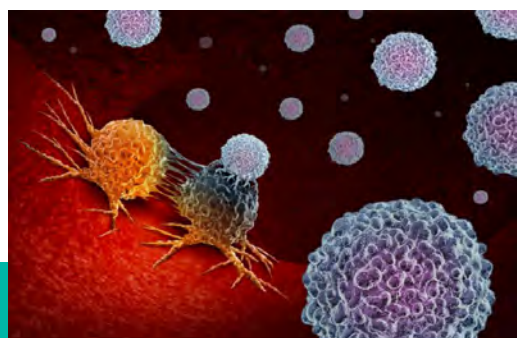
RESEARCH GROUPS

ADOLESCENT AND REPRODUCTIVE HEALTH

- Sexual and Reproductive Health
- Gender Identity and Transgender Care
- HIV and STD prevention
- Mental Health

GENOMICS

- Medical Genetics and Genomics
- Precision Medicine and Public health



CANCER

- Cancer Screening and Prevention
- Cancer Immunotherapy and Cellular Therapy
- Comprehensive Cancer Center
- Stem Cell and Organ Transplantation

NON-COMMUNICABLE DISEASES

- Critical Care Nephrology
- Obesity, Diabetes, Hormone and Metabolism
- Stroke Center
- Cognitive Neuroscience of Dementia
- Immunology and Immune-mediated Diseases
- Kidney Metabolic Disorders
- Gastroenterology and Motility
- Ophthalmology/Otorhinolaryngology
- Parkinson's Disease and Movement Disorders

INFECTIOUS DISEASES & TROPICAL MEDICINE

- Emerging Infectious Diseases and One Health
- Clinical Virology and Epidemiology
- HIV and Tuberculosis
- Vector Biology and Vector-Borne Diseases



VACCINE RESEARCH DEVELOPMENT

- Vaccine Development and Clinical Trials
- Immunization Policy and Implementation

CU HIGHLIGHTS

105 YEARS
CHULALONGKORN
UNIVERSITY



THAILAND
FIRST
INSTITUTION OF
HIGHER LEARNING



20
FACULTIES



23
COLLEGES &
RESEARCH INSTITUTES



Chulalongkorn University was Ranked the No. 1 University in Thailand for 10 Consecutive Years.

- QS World University Rankings 2023

“A leading creator of knowledge and innovations for the sustainable development of society”



8,138
FACULTY MEMBERS



37,626
STUDENTS



26,202
UNDERGRADUATES



10,656
POSTGRADUATES



768
CERTIFICATE
PROGRAM STUDENTS

THE RANKING

801-1000TH
World University Rankings 2023

16TH Impact Rankings 2022

201-250TH
Asia University Rankings 2022

CU TOP 4 SDGs



Top 16



Top 26



Top 16



Top 10

QS RANKINGS

OVERALL #37
QS Asia University Rankings 2023

SOUTHEAST ASIA #7
QS Asia University Rankings 2023

WORLD #224
QS World University Rankings

MDCU HIGHLIGHTS



22
DEPARTMENTS



60
RESEARCH CENTERS



Teaching Hospital : King Chulalongkorn Memorial Hospital, Thai Red Cross Society (1,500 beds)

2
MD
PROGRAMS

1,860
STUDENTS*

12
MS
PROGRAMS

327
STUDENTS*

9
PhD
PROGRAMS

184
STUDENTS*

7
DIPLOMA
PROGRAMS

780
STUDENTS*

468
FACULTY MEMBERS

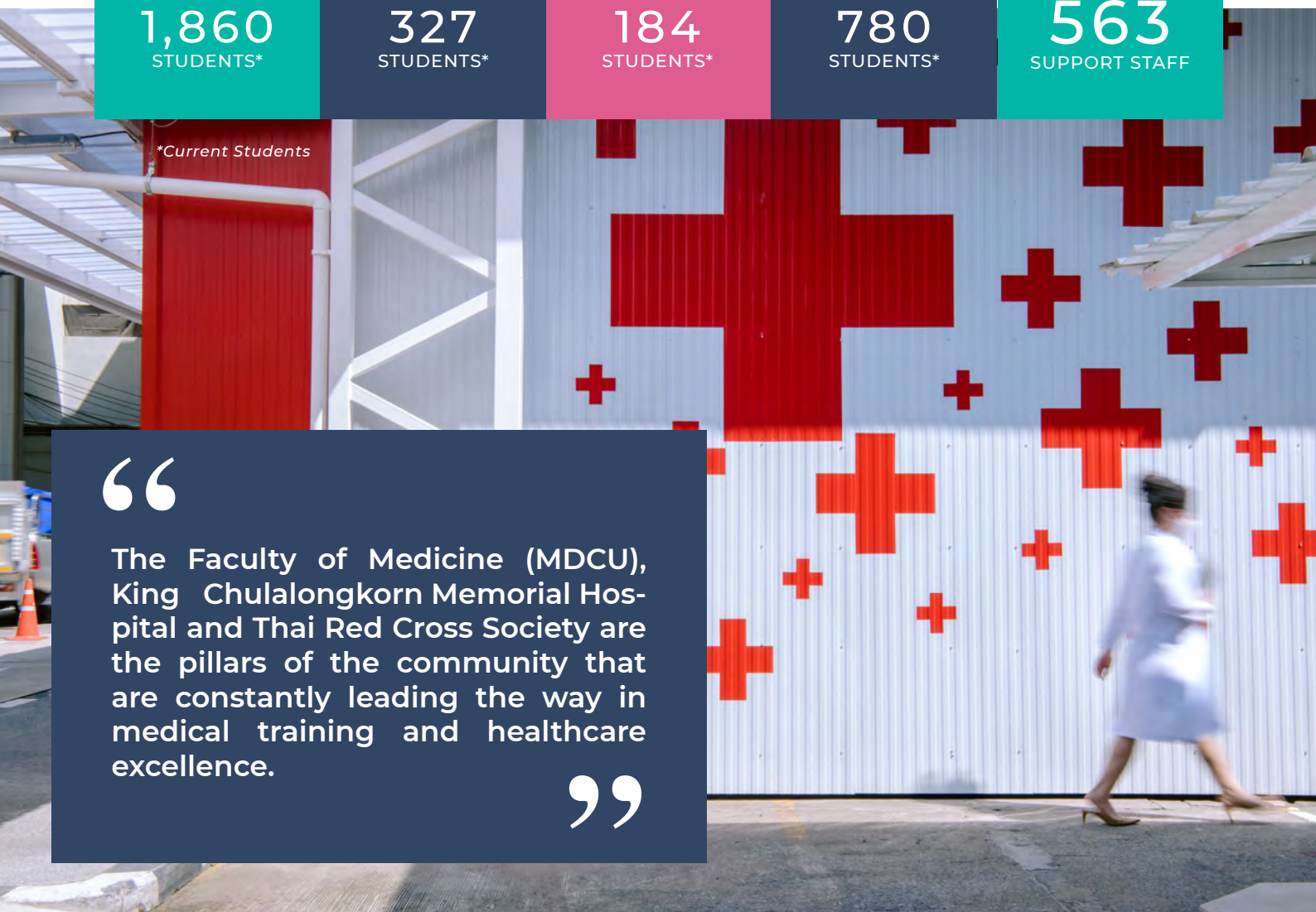
563
SUPPORT STAFF

*Current Students

“

The Faculty of Medicine (MDCU), King Chulalongkorn Memorial Hospital and Thai Red Cross Society are the pillars of the community that are constantly leading the way in medical training and healthcare excellence.

”



OUR PROGRAMS

With over 20 graduate programs ranging from Master's Degree, Ph.D., Residency and Fellowship Training, come explore our diverse course offerings in Clinical Sciences, Health Development, Medical Sciences, and Double Ph.D. Program today!



INTERNATIONAL PROGRAMS

PhD

- Double PhD in Biomedical Sciences & Biotechnology
- Clinical Sciences
- Medical Sciences
- Medical Physics

MASTER

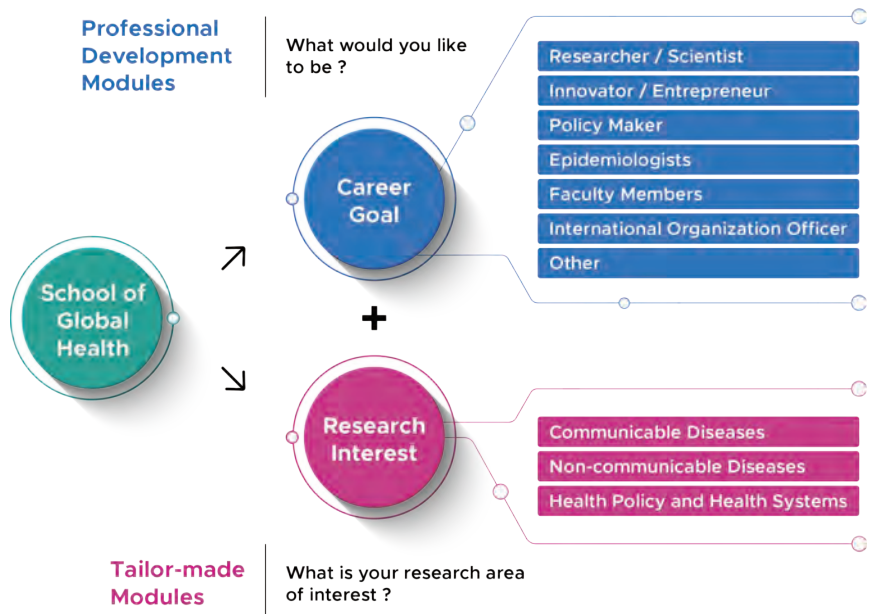
- Clinical Sciences
- Medical Sciences
- Health Development (Clinical Epidemiology)
- Medical Physics

NON-DEGREE PROGRAMS

- CU Pediatric Intensive Care Medicine International Fellowship (Elective Program)
- Endoscopic Ultrasound (EUS) International Training Program
- Movement Disorders in Clinical Practice International Training Program
- Observership and fellowship programs in more than 20 departments

Your Choice

Try designing your future here



TOP-TIER GRADUATE PROGRAMS



Quality is synonymous at the School of Global Health (SGH), Faculty of Medicine, Chulalongkorn University in our graduate and post-graduate courses, especially our Clinical Sciences and Medical Sciences Programs.

We are proud to be recognized and certified by ASEAN University Network Quality Assurance (AUN-QA).

SCHOLARSHIPS

We offer both education and research scholarships to our students to support their academic success. Our highlight funding is “Chulalongkorn University’s Graduate Scholarship Programme for ASEAN or Non-ASEAN Countries”.

The scholarships will cover the tuition fees, travel expenses, monthly stipend and accommodation charges.

You can find more information at <http://grad.md.chula.ac.th/scholarship.php>

ONLINE ACTIVE RECRUITMENT FOR INTERNATIONAL GRADUATE PROGRAMS

APPLICATION PERIOD: DECEMBER - APRIL

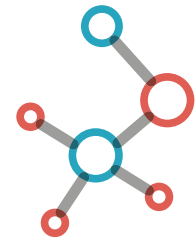
APPLICATION WEBSITE:
<http://grad.md.chula.ac.th/activerecruitment/>

REQUIRED DOCUMENTS:

- Application form
- CV
- Transcript
- English proficiency test score (TOEFL, IELTS and CU-TEP)
- Passport
- Two recommendation letters



DOUBLE PhD IN BIOMEDICAL SCIENCES & BIOTECHNOLOGY



PROGRAM OVERVIEW

PhD in Biomedical Sciences and Biotechnology is an International Double Degree programme between the Faculty of Medicine, Chulalongkorn University and the Faculty of Health and Life Sciences University of Liverpool. Students receive a double award from the two Institutions. It is a 4 year programme and students must spend a minimum of 6 months full-time at the University of Liverpool.

The curriculum has been developed by the collaboration between both universities. Students can choose to enroll in either Chulalongkorn University or University of Liverpool.

Our program aims at producing highly-qualified researchers specializing in biomedical sciences and biotechnology who are skillful in the application of advanced technologies and innovations.



MEDICAL SCIENCES (PhD / MASTER)

KEY RESEARCH AREAS

- Applied and Clinical Anatomy
- Cell Biology and Human Molecular Genetics
- Neurosciences
- Parasitology and Tropical Medicine
- Pathology
- Molecular Pharmacology and Advanced Therapeutics
- Medical Physiology
- Applied Biochemistry and Molecular Biology
- Stem Cell and Regenerative Medicine
- Forensic Sciences
- Clinical Pathology
- Sport and Exercise Medicine
- One Health
- Microbiology and Immunology



PROGRAM OVERVIEW

The program in Medical Sciences is an integration of in-depth research in medical sciences and innovations from various disciplines to come up with a new body of knowledge.

Best for: Basic and Translational Researcher



CLINICAL SCIENCES (PhD / MASTER)



KEY RESEARCH AREAS

- Medicine
- Pediatrics
- Surgery
- Orthopedics
- OB-GYN
- ENT
- Anesthesiology
- Ophthalmology
- Rehabilitation
- Psychiatry
- Pathology
- Global Health & Tropical Medicine
- Oncology

PROGRAM OVERVIEW

This program aims to produce competent clinical researchers with experience in advanced research, and to produce specialized innovative research works in the various areas of clinical sciences.

The students with high potential can be enrolled in the available clinical training programs while they run their clinical research.

Best for: Clinical Researcher, Clinician-Scientist

MASTER IN HEALTH DEVELOPMENT (CLINICAL EPIDEMIOLOGY)



PROGRAM OVERVIEW

The Master of Science in Clinical Epidemiology is a collaboration of 3 leading institutes; Chulalongkorn University, Khon Kaen University and Mahidol University.

Students will learn the principles of research methodology, biostatistics, health social science, and clinical economics. Students will join with our collaborative environment with each institutional facilities.

The program aims to build the critical abilities among students, to become leaders in health institutions.

Best for: Public Health Professional, Clinical Epidemiologist

For more information on curriculum structure, tuition and fee, please visit the website <http://grad.md.chula.ac.th>

SGH ACTIVITIES



Dr. Dennis Carroll, the world-renowned expert and Distinguished Professor of Faculty of Medicine, discussed with young fellows and students in SGH Megatrends in Healthcare Workshop.

KNOWLEDGE IS POWER

Here, we welcome and encourage the renowned experts to impart tried-and-true approaches to help better understanding global health trends and strategies to combat global health threats and challenges.



Dean Michelle Williams of Harvard T.H. Chan School of Public Health delivered a talk on Global Health's Bold Agenda.



'mRNA/LNP Technology: The Discovery for Global Health' by three Prince Mahidol Award 2021 Laureates: Prof. Katalin Karika (BioNTech & U Penn, USA), Prof. Drew Weissman (U Penn, USA), Prof. Pieter Cullis (U British Columbia, Canada) with Prof. Kiat Ruxrungtham, our SGH Director, who developed the first mRNA COVID-19 vaccine (ChulaCoV19) in Thailand.



'Global Health Leadership and Diplomacy' talk was given by H.E. Ambassador Pisanu Suvanajata, Royal Thai Embassy in London



SGH'S MISSION FOR GLOBAL HEALTH SECURITY AND HEALTH EQUITY

We also take it a mission to introduce to relevant stakeholder groups and society at large the global trends and experts' thoughts on global health security and health equity issues. In action to promote health equity through regional cooperation, networking forums have been organized in various areas. Scholarships are also provided for medical professionals to be trained in specialized practice and leadership program.



ASIA Fellows Program in Aging, Hearing, & Public Health, was jointly conducted with Johns Hopkins Cochlear Center for Hearing and Public Health.



Dr. Somsavath Soulivong from Laos and Dr. Lyhour Y from Cambodia, the scholarship recipients of Pediatric Intensive Care Fellowship Program

SGH FOR 'LEADER DEVELOPMENT ACROSS BORDERS'

The SGH works in partnership with the Health Education England to develop leaders for the future by broadening medical fellows' experiences beyond the traditional medical boundaries in local setting. Fellows selected from National Health Service undertake a 12-month placement working with partner sites in Thailand under UK – Thailand Public Health Research Fellowship. Selection of fellows from Thailand for training and placement in UK are currently coordinated by the SGH.

UK – Thailand Public Health Research Fellows visited BAIYA, Thailand's first plant-based COVID vaccine developer, as part of their field visit.



Welcome event for Master students from University of Liverpool, UK, to join an elective course with us to expand their experiences about health research in Asia.

SGH TRAINING AND MODULAR COURSES DEVELOPMENT



Modular courses are developed and offered for both Degree and Non-degree programs to upskill and reskill healthcare professionals, and for the life-long learners.



ALUMNI TESTIMONIALS



"During the joint PhD programme, I had the opportunity to engage with leaders in the field and hands-on with some state of art research techniques. Those experiences were invaluable and prepared me for my career in academia. Currently, I am a BHF Mautner Career at the University of Leeds and building my research group in infection and cardiovascular disease."

Cheng Chew Weng (Malaysia)
Joint Ph.D. in Biomedical Science and Biotechnology (CU-UoL)

"My Ph.D. research focuses on developing a novel therapy for chronic lung infections. The program gave me opportunities to enhance my research skills not only theoretically but also in clinical medicine. The program has so much breadth and depth and allows enormous freedom to explore your research ideas. The program provides me with the logical training route to merge my interests in patient care and, ultimately, a career in academic medicine. That led me to win the young investigator award in respiratory medicine in 2018 and 2021. My supervisors, faculty members, and fellow students are extremely supportive. Because of the program's wide variety of opportunities, I was able to transfer to Australia and gain more hands-on research experience. Currently, I am doing my clinical training at the Yamagata Prefectural Central Hospital Japan and pursue my research interest in infectious diseases."

Leshan Wannigama (Sri Lanka)
Medical Sciences International Program



"During my Ph.D. study in the Clinical Sciences Program, I've learned a lot about research methodology, biostatistics, research ethics and how to conduct the high-quality clinical research. I have an opportunity to conduct the study on invasive fungal sinusitis in diabetes patients and collect data from 3 countries (Thailand, Myanmar, and Malaysia). These research experiences strengthen my research skills, soft skills, and enhance international collaborations."

Thwe Phyo Kan Nyunt (University of Mandalay, Myanmar)
Clinical Sciences International Program



"My study journey in Master Program in Health Development has been an extraordinary experience. I am grateful to my supervisors and all instructors. This program cultivates me to develop research skills in public health sciences. I had the opportunity to learn principles of research methodology, health social science and clinical economics. My research about variation of tuberculosis prevalence across diagnostic approaches and geographical area is published in high-ranked journal."

Alvera Noviyani (Indonesia)
Health Development (Clinical Epidemiology)



"My research and clinical skills have flourished since the start of my Ph.D. studies in the Clinical Sciences Program. During my training, I published 12 international articles, won and received 5 international awards at several international congresses, respectively. Now that I am back at my home institute, Hue University of Medicine and Pharmacy, I am able to apply all of my learned skills to help my local population. I plan to pursue a postdoctoral degree in the future to continue working with the research team in the Department of ENT at MDCU."

Minh Phuoc Hoang (Vietnam)
Clinical Sciences International Program

CAMPUS LIFE & ACTIVITIES



MedChula Buddy Project

Take couple days to hang out, explore secret restaurants hiding in Bangkok, or just couple hours talk about what you are experiencing here in Thailand together. This is a heartwarming activity that builds life-long friendship between international and Thai students. All international students will be assisted by current local students who voluntarily join the project until their graduation.

MDCU Graduate Student Life and Wellness Project (Postgrad Café)

Whenever you have difficult time, we are here for you. MDCU Graduate Student Life and Wellness or MDCU Postgrad Café, provides support service for students who are facing the problems related to their studies, adaptation to new environment, mental issues, and any other issues that are interrupting you. The project has launched by a professional and friendly team of psychologists and psychiatrists.



Graduate Research day

The opportunity for graduate students and residents to showcase their research to our top-class professors who are invited to be judges on the day. On the big day, participants will present their current research to both judges and other participants. Please visit Graduate Affair site for the update.

International Village Party

A casual event for Thai and international graduate students to discuss and share experiences of studying at MDCU, as well as to strengthen good relationship among international students. It is also an opportunity for students to talk and discuss casually with management team, course instructors and administrative staff.



CAMPUS FACILITIES

FACULTY OF MEDICINE LIBRARY

It is an ideal place for studying and a popular meeting spot. Each floor consists of computer stations and small group facilities. Twenty-four-hour coffee shop serves every day to enhance our learning capacity.

CENTRAL LIBRARY (CHULALONGKORN UNIVERSITY LIBRARY)

Chulalongkorn University Library or Central Library is full with information resources and homegrown co-created contents that cannot be found elsewhere. It offers both large collections of physical books, and digital resources.

RELIGIOUS SERVICES

Religious Service at Chulalongkorn University includes Prayer rooms for both Muslim and Christian students. The rooms are dedicated for practice prayer. The prayer space is separated, well decorated and located in calm and peaceful location.

SPORT FACILITIES

Chulalongkorn University offers a number of sport facilities for healthiness of students and staff. Students are required to show ID card in order to obtain services.

Chulalongkorn Stadium – This standard outdoor stadium, with 25,000 maximum seating capacities, is ideal for football, hockey, rugby, and other outdoor sports. There are synthetic turf and 8-lane synthetic tracks; Sport Library is also available.

Indoor Sports Gymnasium 1 – Multi-purpose gymnasium, with 4,100 square meters, provides facilities for various types of sports volleyball, for example, basketball, table tennis. For some sports, advance booking is required.

Indoor Sports Gymnasium 2 – Table tennis courts, exclusive use for Chulalongkorn students and staff.

CU Sports Complex – a 5-storey sport complex, providing various sport services including indoor badminton court, 50-meter outdoor swimming pool, fitness center and aerobic dance room, martial arts training room. Shower room and locker are available.

Tennis Courts – 10 tennis courts with full lighting; knock boards for self-practice are also available.

DORMITORY

CU I-HOUSE, a 26-storey, 846-unit, on campus residence for international students and lecturers. Rooms come fully furnished with air conditioning, modern conveniences, 24-hour security and safety systems. The residence is included in the university's shuttle bus services.

TRANSPORTATION

Chula Pop Bus - Chulalongkorn University provides free shuttle bus service for students, faculty and staff. The shuttle bus service operates all routes on Monday to Saturday from 7 AM – 7 PM.





SCHOOL OF GLOBAL HEALTH

Graduate Affairs, Faculty of Medicine, Chulalongkorn University
3rd floor, Ananda Mahidol Building, Henri Dunant Road,
Pathumwan, Bangkok 10330

Phone: +66 2256 4475

Email: school.global.health@chula.md

<https://sgh.md.chula.ac.th/>